



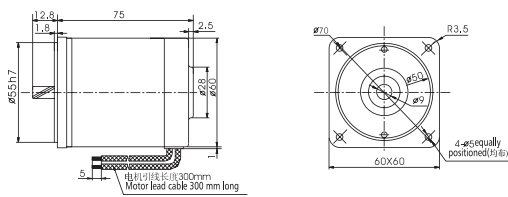
DC Motor 6-10W

Motor Performance Parameters

Model	Voltage v	Power w	No-load Parameters		Load Parameters			Brush Life H	Motor Weight kg
			Speed r/min	Current A	Speed r/min	Torque mN.m	Current A		
Z2D06-12 □	12	6	3200	0.6	2950	19	0.8	2000	0.6
Z2D06-24 □	24	6	3200	0.3	2950	19	0.5	2000	0.6
Z2D06-90 □	90	6	3000	0.2	2800	20	0.3	2000	0.6
Z2D10-12 □	12	10	3200	1.0	2800	32	2.0	2000	0.7
Z2D10-24 □	24	10	3300	0.5	3000	24	0.9	2000	0.7
Z2D10-90 □	90	10	3200	0.3	2800	32	0.6	2000	0.7

* Note: It's only typical technical data, special requirement can be customized.

Motor Dimension

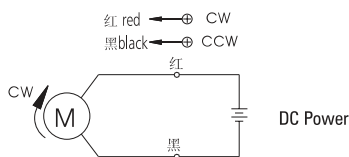


Gearbox Torque and Speed

Model of Gearbox: 2GN□K

Model	Reduction Ratio		3	3.6	5	6	7.5	9	10	12.5	15	18	20	25	30	36	40	50	60	75	90	100	120	150	180	200
Z2D06-24 □	Output Shaft Speed	r/min	1067	889	640	533	427	356	320	256	213	178	160	128	107	89	80	64	53	43	36	32	27	21	18	16
Z2D10-24 □	Allowable Torque	N.m	0.04	0.05	0.07	0.09	0.11	0.13	0.15	0.18	0.22	0.26	0.26	0.33	0.39	0.47	0.52	0.65	0.71	0.89	1.06	1.18	1.42	1.77	2.13	2.36
		kgf.cm	0.44	0.53	0.74	0.89	1.11	1.33	1.48	1.85	2.22	2.66	2.66	3.33	4.00	4.80	5.34	6.67	7.24	9.04	10.85	12.06	14.47	18.09	21.71	24.12

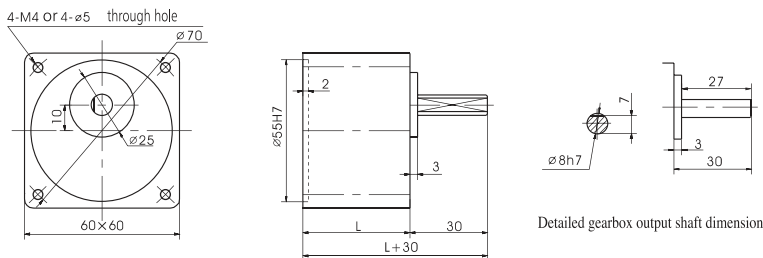
Wiring Diagram



Bare Motor Output Shaft Dimension

Model	Gear Shaft Z2D06-□GN Z2D10-□GN	Flat type Z2D06-□A Z2D10-□A
Output Shaft Type and Dimension		

Gearbox Dimension



Gearbox	Reduction Ratio	L(mm)	Q(kg)
2GN3K-GN18K		32	0.24
2GN20K-GN50K		42	0.30
2GN60K-GN200K			0.33

Characteristic Curve

